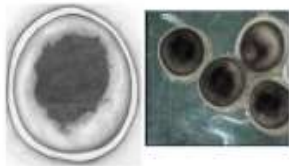


Morphology of Embryonic and Larval Lake Sturgeon

Lake Superior State University

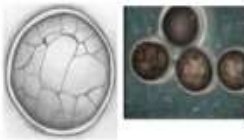
Amy Furman
and Barbara Evans

1 Day Post Fertilization



Animal Pole

1 Day Post Fertilization



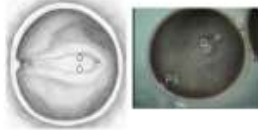
Vegetal Pole

2 Days Post Fertilization



Animal Pole

3 Days Post Fertilization



Primitive Streak (PS) and Prosencephalon (P) with the beginnings of the Optic Lobes (O)

4 Days Post Fertilization



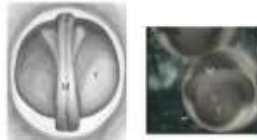
Closed Neural Tube

5 Days Post Fertilization



Optical Lobe (O) and Yolk Sack (Y)

5 Days Post Fertilization



Myelon (M) or spinal cord, and Yolk Sack (Y)

6 Days Post Fertilization



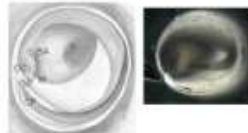
Optic Cups (OC), Cerebellum (Ce), and Mesencephalon (M)

7 Days Post Fertilization



Mouth (Mo), Optic Cup (OC), free Tail (T) and Yolk Sack (Y)

9 Days Post Fertilization



Olfactory Pit (OP), Caudal Fin (CF), Yolk, Branchial Arches (BA), Mouth (M) and Optic Cup (OC)

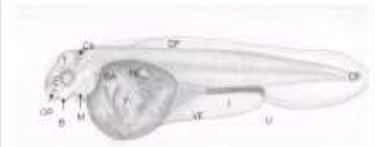
Hatching



Tectum (T), Branchial Arches (BA), Mouth (M), Eye (E), Olfactory Pit (OP), and Ventral Fin (VF)

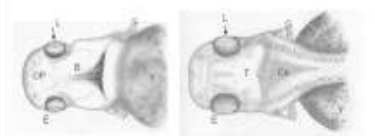
Caudal Fin (CF), Urogenital Opening (U), Intestine (I) and Yolk (Y)

3 Days Post Hatch



Eye (E), Tectum (T), Cerebellum (Ce), Olfactory Pits (OP), Mouth (M), Branchial Arches (BA), Pectoral Fin (PF), Caudal Fin (CF), Urogenital Opening (U), Intestine (I), Ventral Fin (V), beginnings of Barbels (B), Yolk (Y), and Dorsal Fin (DF)

3 Days Post Hatch



Eye (E), Lens (L), beginning of Barbels (B), external Gills (G), Oral Cavity (OC), Olfactory Pits (OP), and Yolk (Y)

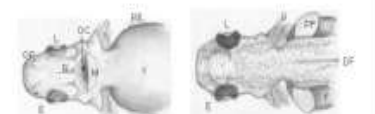
Eye (E), Lens (L), external Gills (G), Tectum (T), Cerebellum (Ce), and Yolk (Y)

7 Days Post Hatch



Eye (E), Olfactory Pit (OP), Barbels (B), Mouth (M), external Gills (G), Tectum (T), Pectoral Fin (PF), Dorsal Fin (DF), Ventral Fin (VF), Caudal Fin (CF), Urogenital opening (U), Intestine (I), and Yolk (Y)

7 Days Post Hatch



Eye (E), Lens (L), Olfactory Pits (OP), external Gills (G), Mouth (M), Oral Cavity (OC), Barbels (B), Pectoral Fin (PF) and Yolk (Y)

Eye (E), Lens (L), external Gills (G), Dorsal Fin (DF), Pectoral Fin (PF) and Yolk (Y)